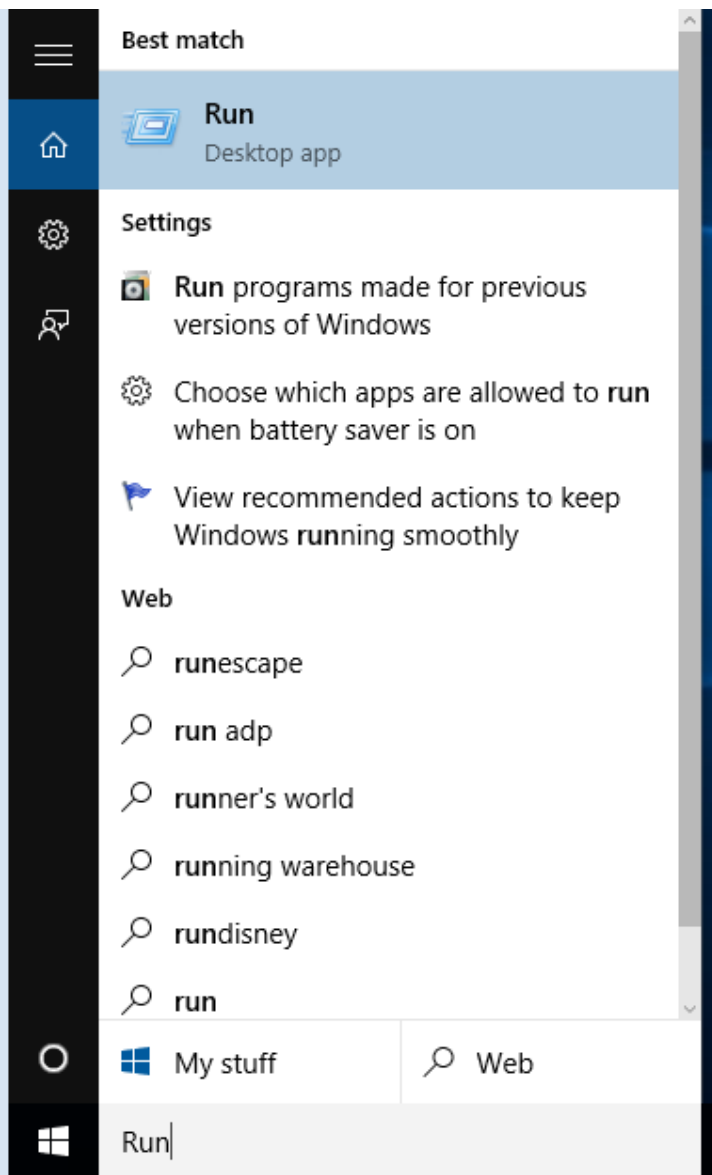


How to Configure Windows 10 to run eReports on IE11

Description: Windows 10 ships with the new Microsoft Edge browser, but it also ships with IE11 for legacy applications. There is a special mode in IE11 called “Enterprise Mode” that can be used to emulate IE8 within IE11 for legacy websites that won’t work under IE11 by default. This document describes the steps necessary to turn on Enterprise Mode for the eReports website effectively making it function as expected under Windows 10.

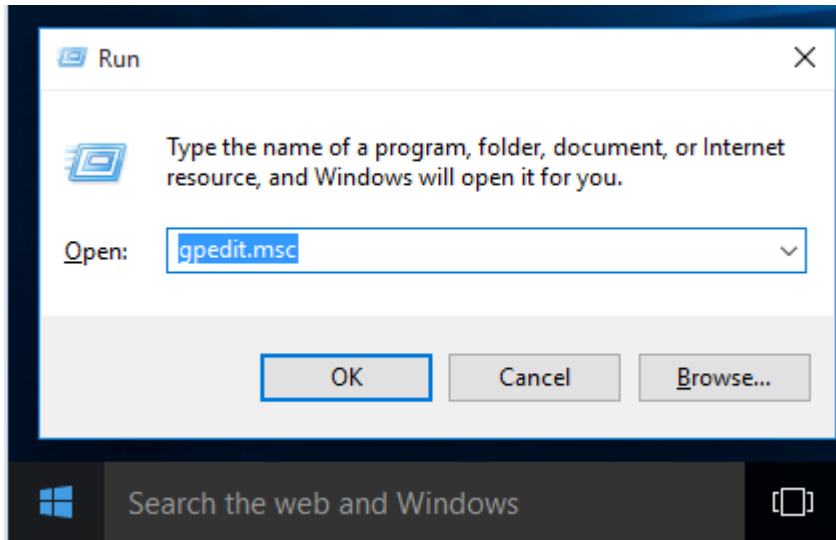
Procedure: Follow these steps to configure Windows 10 for eReports:

- 1) In the “Search the Web and Windows” box enter “Run” (Without the double-quotes) and press the Enter key as shown below.

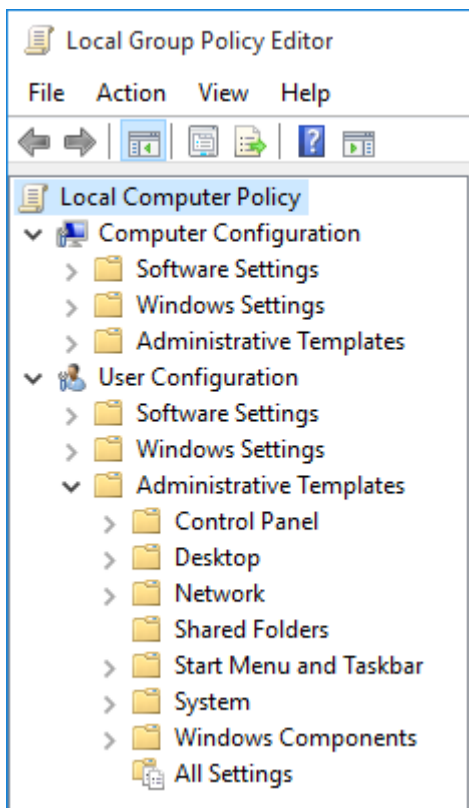


How to Configure Windows 10 to run eReports on IE11.docx

- 2) In the “Run” dialog enter “gpedit.msc” (without the double-quotes) and click “OK” as shown below.

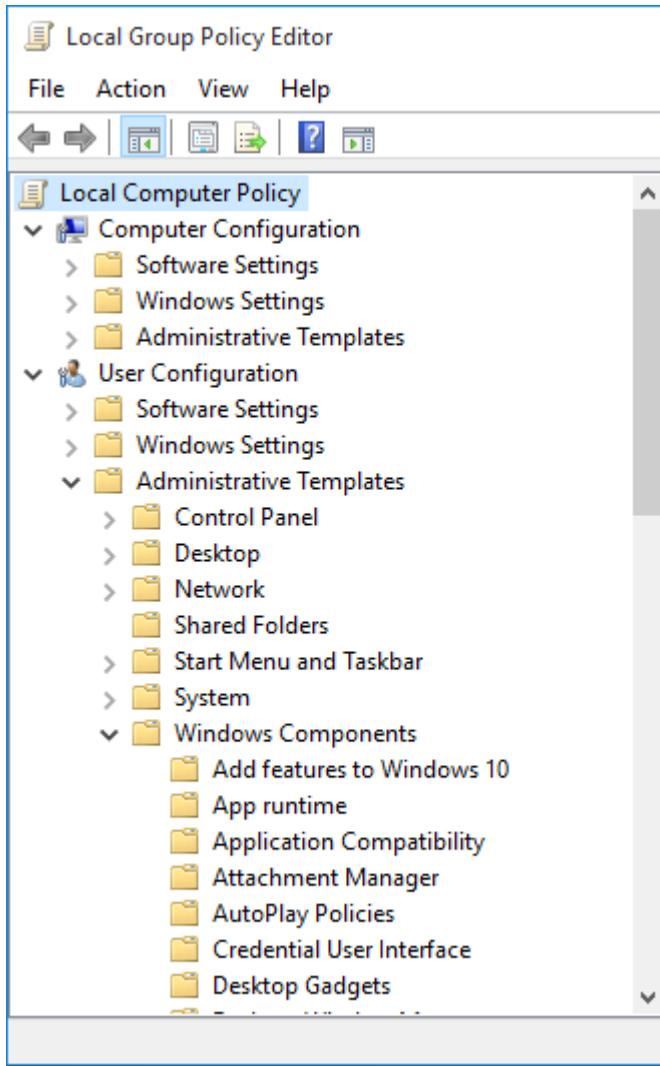


- 3) In the “Local Group Policy Editor” in the left-hand pane (Local Computer Policy) click on the arrow to the left of the “Administrative Templates” folder under “User Configuration” to open the folder as shown below.



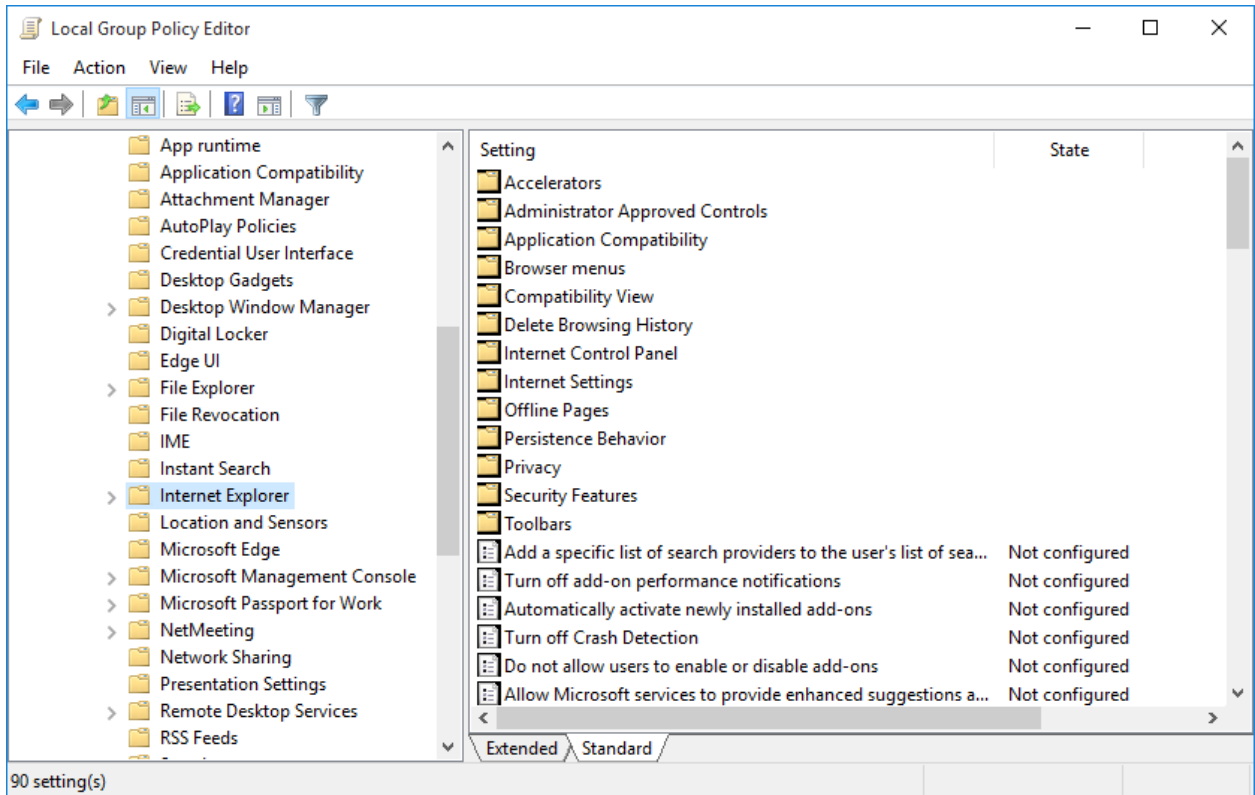
- 4) Click the arrow to the left of the “Windows Components” folder to open the folder as shown below.

How to Configure Windows 10 to run eReports on IE11.docx

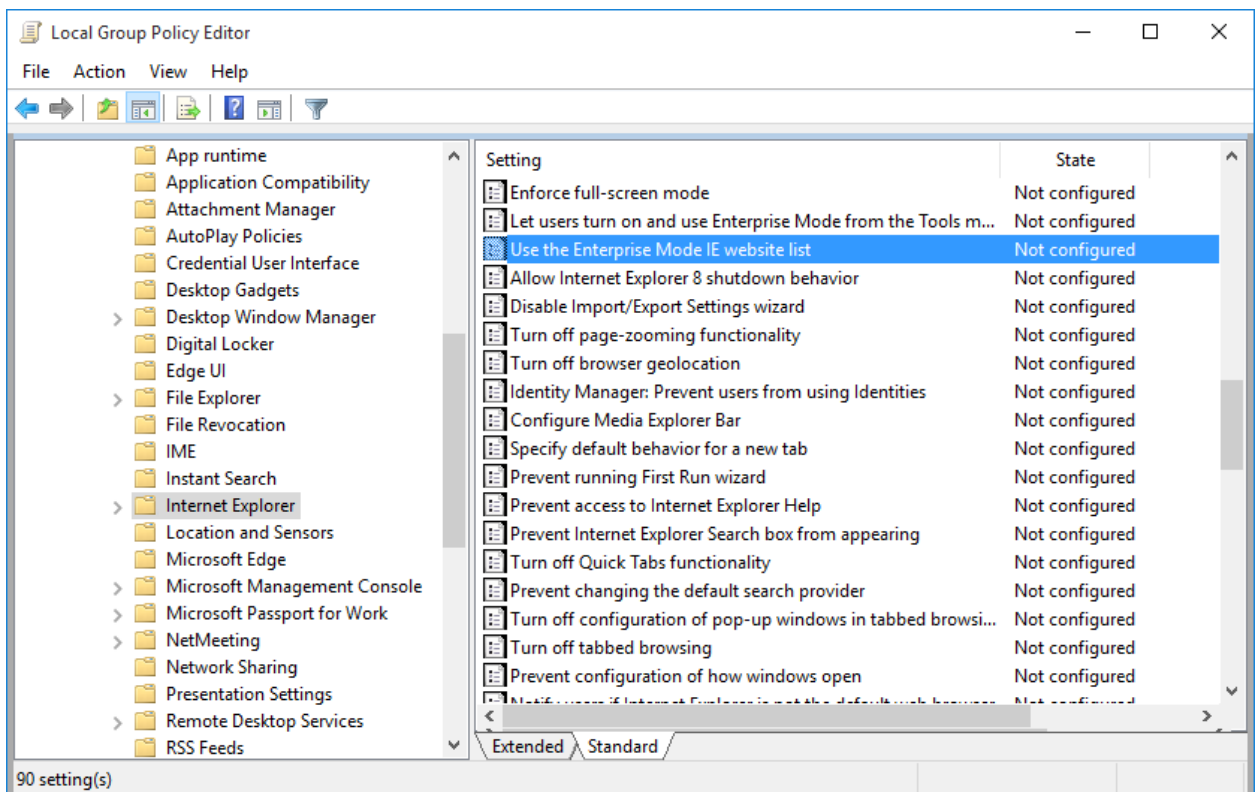


- 5) Scroll down the list and locate the "Internet Explorer" folder and single-click on the folder itself (not the arrow to the left of it) as shown below.

How to Configure Windows 10 to run eReports on IE11.docx

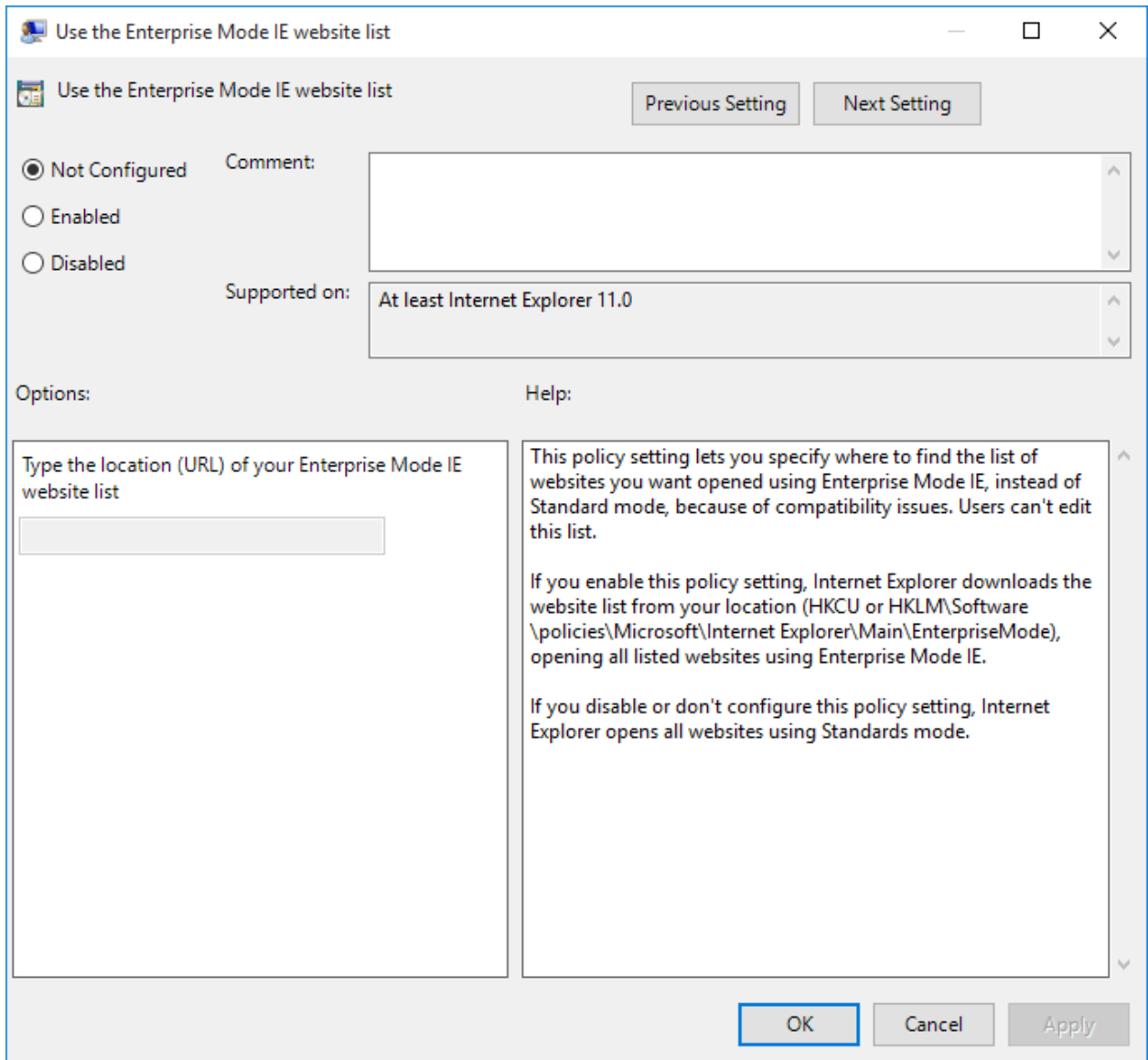


- 6) Scroll down in the list of options in the right-hand pane and find the “Use the Enterprise Mode IE website list” option as shown below.



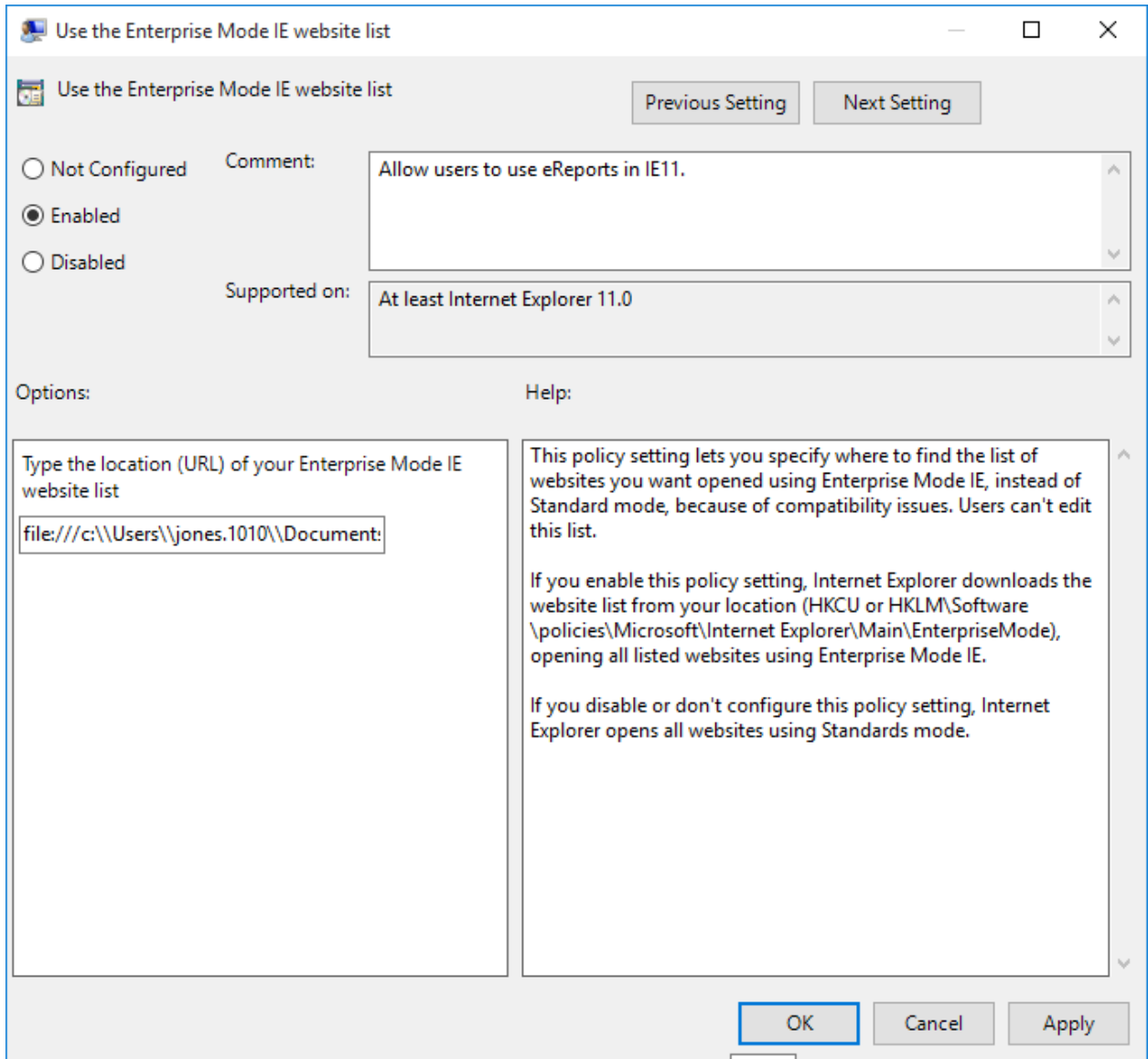
How to Configure Windows 10 to run eReports on IE11.docx

- 7) Double-click the “Use the Enterprise Mode IE website list” option and you should get the dialog shown below.

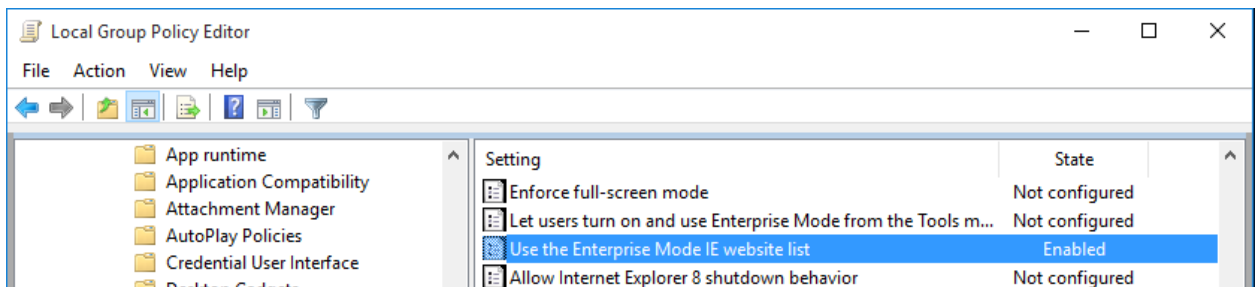


- 8) Click the “Enabled” radio button to the left and add “file:///C:\\Users\\<username>\\Documents\\IE11_Enterprise_Mode_Sites.xml” (without the double-quotes) into the “Type the location (URL) of your Enterprise Mode IE website list” text box and click “OK” to save the configuration change as shown below. (NOTE: Make sure to change <username> to the users Windows username (the example shows a user named jones.1010) and make sure to include the entire URL as shown above. The text box is too small to show the entire string!)

How to Configure Windows 10 to run eReports on IE11.docx



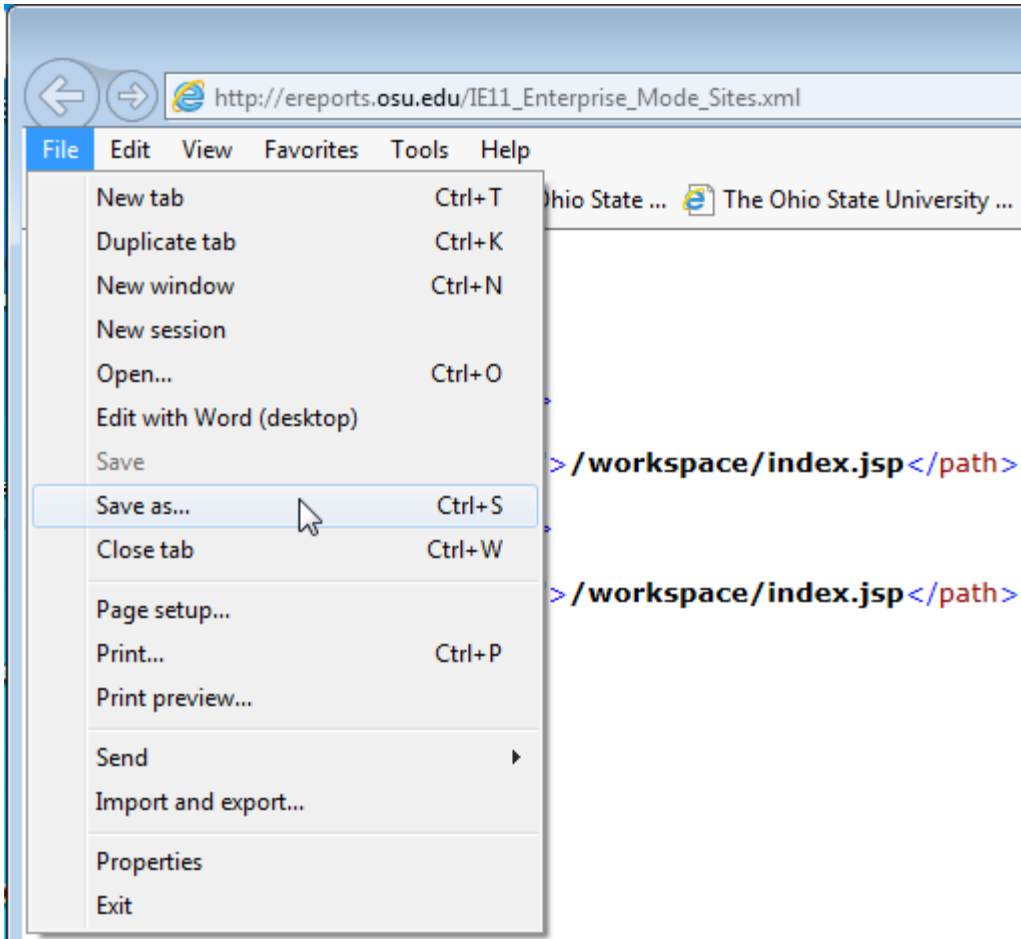
9) The item should now show that it is enabled as shown below.



10) Close the "Local Group Policy Editor" by going to the "File" menu and selecting "Exit".

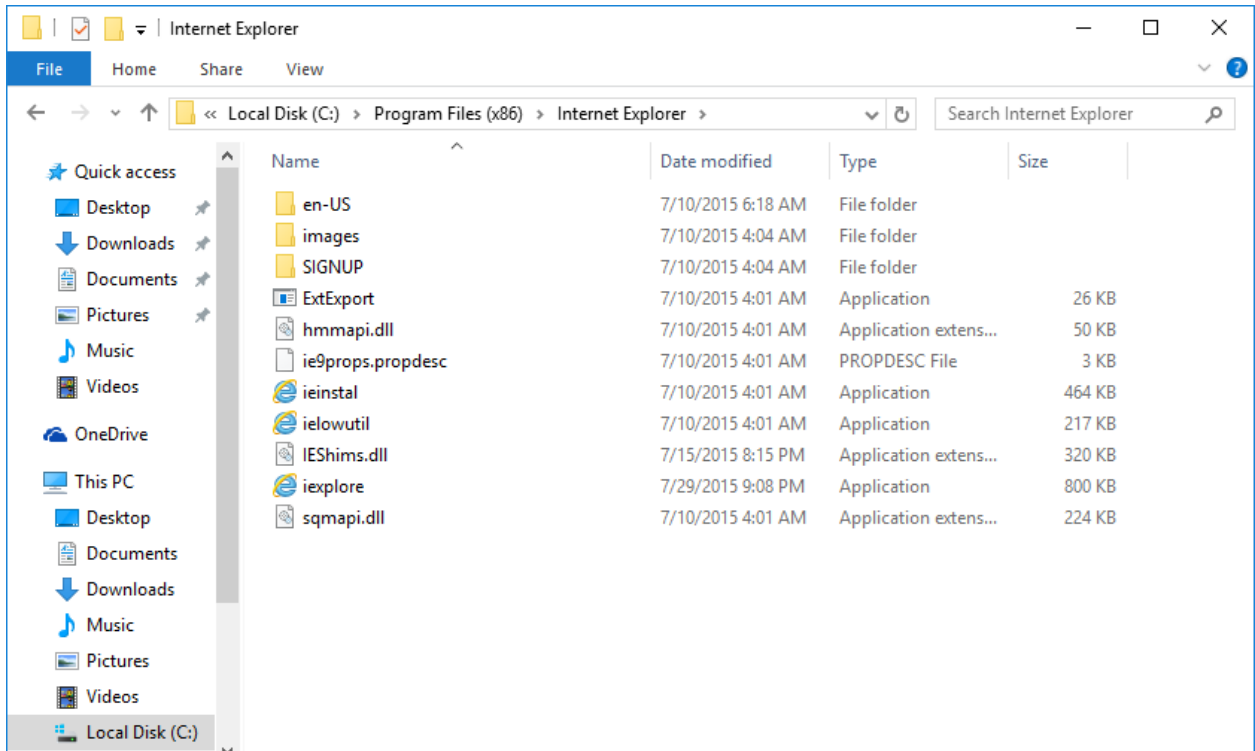
How to Configure Windows 10 to run eReports on IE11.docx

- 11) Access http://ereports.osu.edu/IE11_Enterprise_Mode_Sites.xml to download the IE11_Enterprise_Mode_Sites.xml file.
- 12) When the web page opens click the “File” menu and the “Save As” option as shown below.



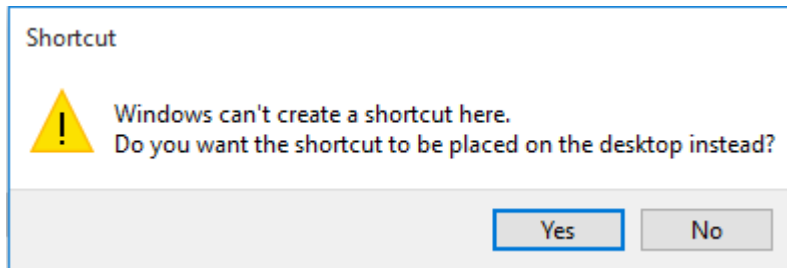
- 13) When the “Save As” dialog appears, navigate to the users Documents directory at C:\Users\\Documents and save the document. NOTE: Make sure to replace <username> in the previous statement with the users Windows username. Using our example user the location to copy the file would be: C:\Users\jones.1010\Documents.
- 14) Open “File Explorer” and navigate to “C:\Program Files (x86)\Internet Explorer” as shown below.

How to Configure Windows 10 to run eReports on IE11.docx



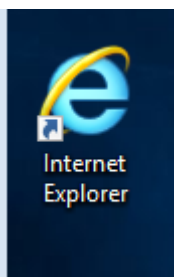
15) Right-click on the "ieexplore" application and click the "Create shortcut" option.

16) You should get the following dialog.



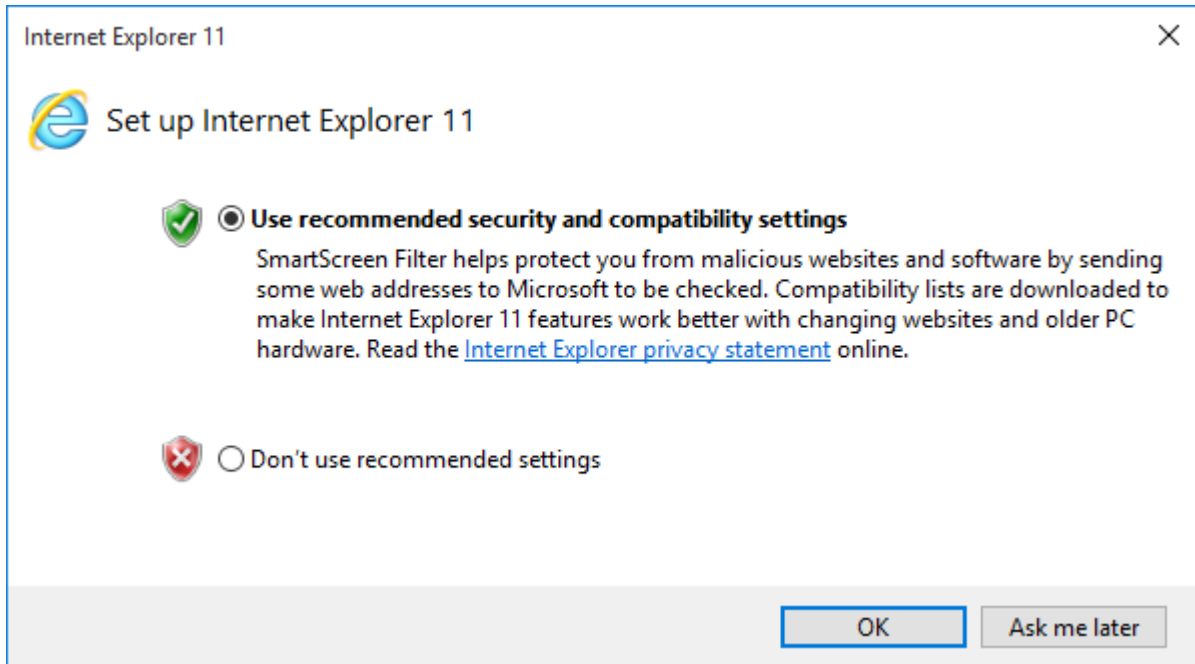
17) Click "Yes"

18) Right-click on the new shortcut on the desktop and use the "Rename" option to change the name of the shortcut to "Internet Explorer" (Without the double-quotes) as shown below.

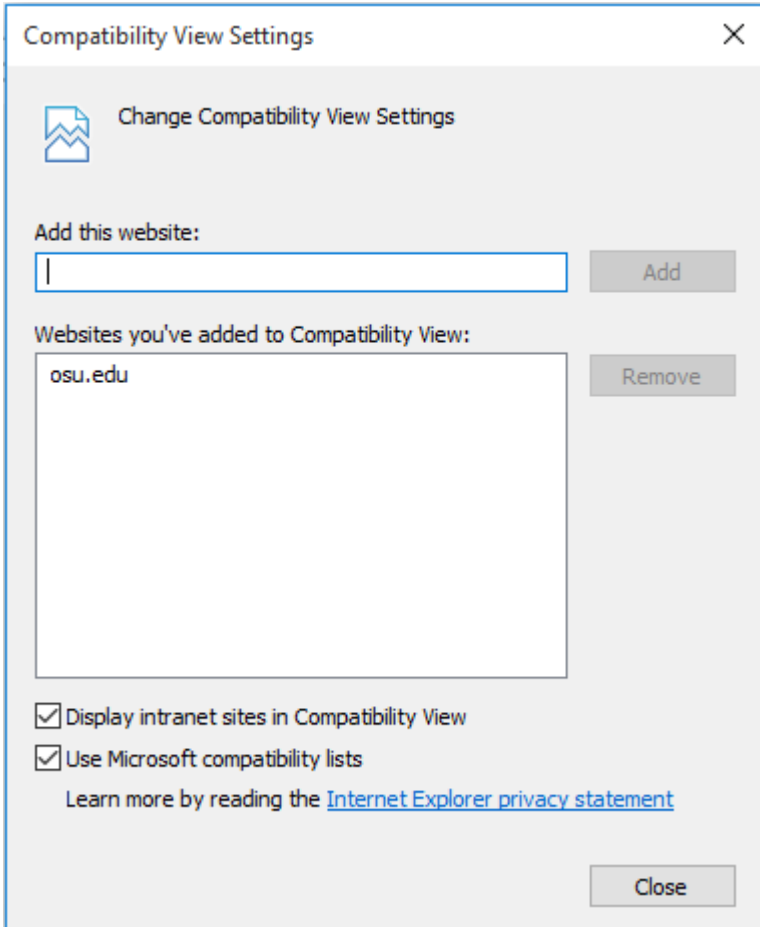


19) Double-click the new "Internet Explorer" shortcut on the desktop to start Internet Explorer.

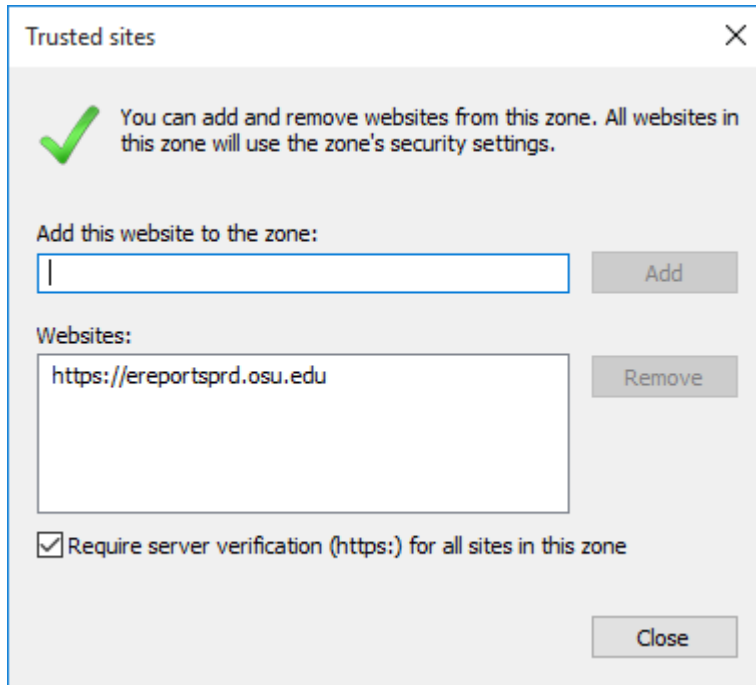
20) Click on the "User recommended security and compatibility settings" radio button and click "OK" as shown below if that dialog appears.



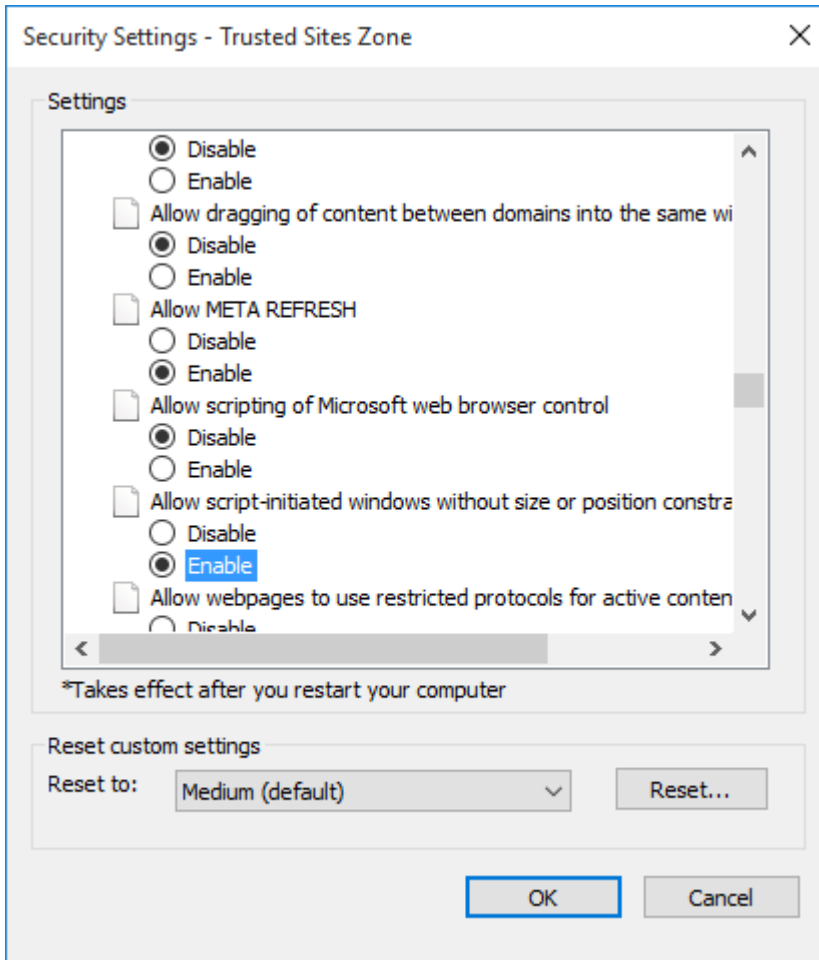
- 21) Click on the gear at the top right of IE11 to open the “Settings” menu and select the “Compatibility View setting” item toward the bottom of the list.
- 22) Add “osu.edu” (without the double-quotes) to the “Add this website” textbox and click the “Add” button and you dialog should look like the one below.



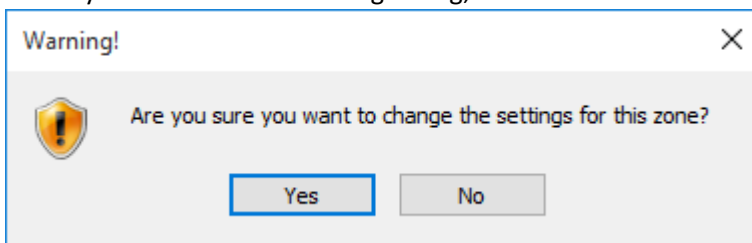
- 23)
- 24) Click the "Close" button to close the dialog
- 25) Click on the gear at the top right of IE11 to open the "Settings" menu and select the "Internet options" item toward the bottom of the list.
- 26) Click on the "Security" tab then click the "Trusted Sites" checkmark in the "Select a zone to view or change security settings." window. Then click the "Sites" button.
- 27) In the "Add this website to the zone:" textbox enter "https://ereportsprd.osu.edu" (without the double-quotes) and click the "Add" button. Your dialog should look like the dialog below when you are done.



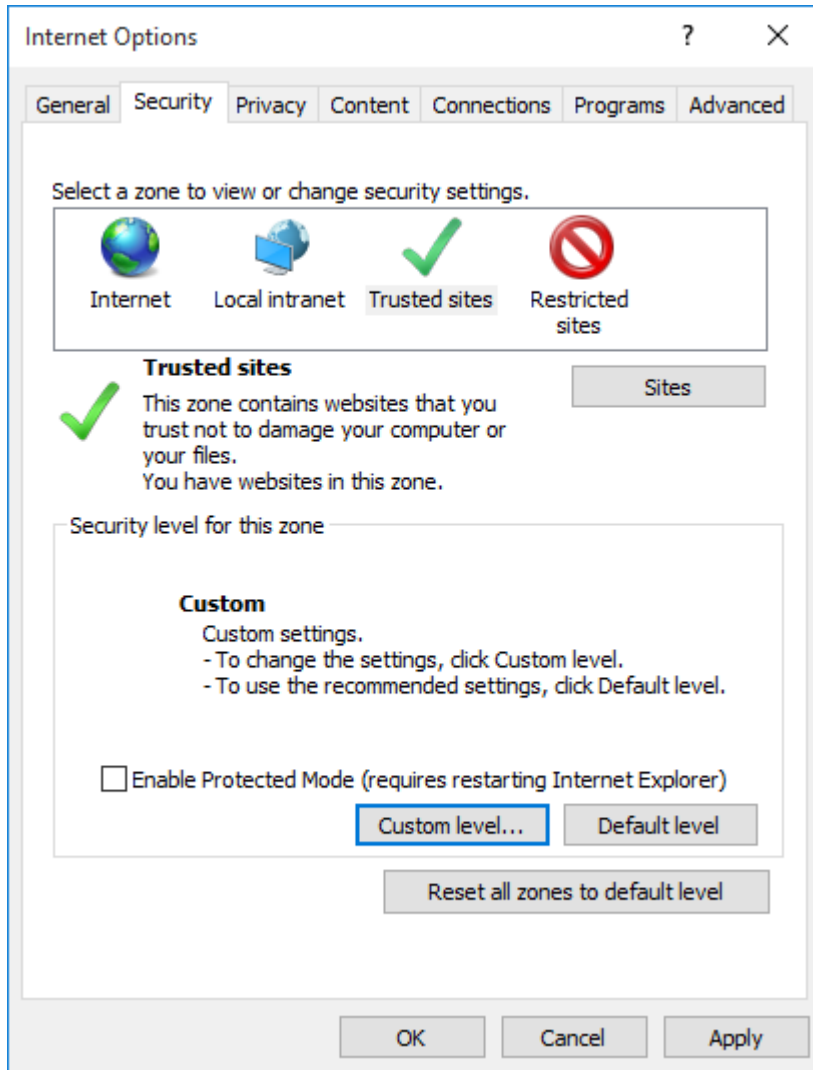
- 28)
- 29) NOTE: If the user is a developer you will also want to add "https://ereportsdev.osu.edu" (without the double-quotes).
- 30) Click "Close" to close the dialog.
- 31) Towards the bottom of the "Internet Options" dialog on the "Security" tab in the "Security level for this zone" window click the "Custom Level" button.
- 32) Scroll down in the list until you find the "Miscellaneous" section and look for the "Allow script-initiated windows without size or position constraints" option and click the "Enable" radio box next to it as shown below.



- 33)
- 34) Click "OK" to save the settings.
- 35) When you receive the following dialog, click "Yes".

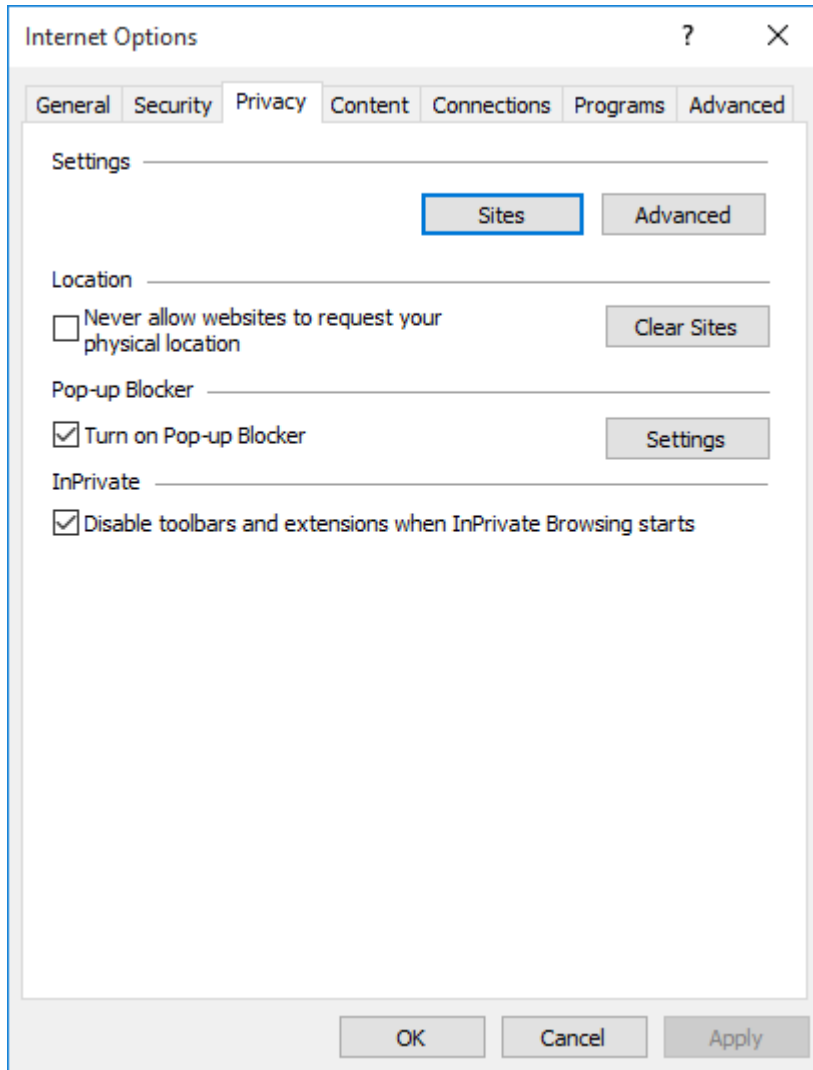


- 36)
- 37) On the "Internet Options" dialog on the "Security" tab make sure that the "Enable Protected Mode (requires restarting Internet Explorer)" checkbox is unchecked as shown below.



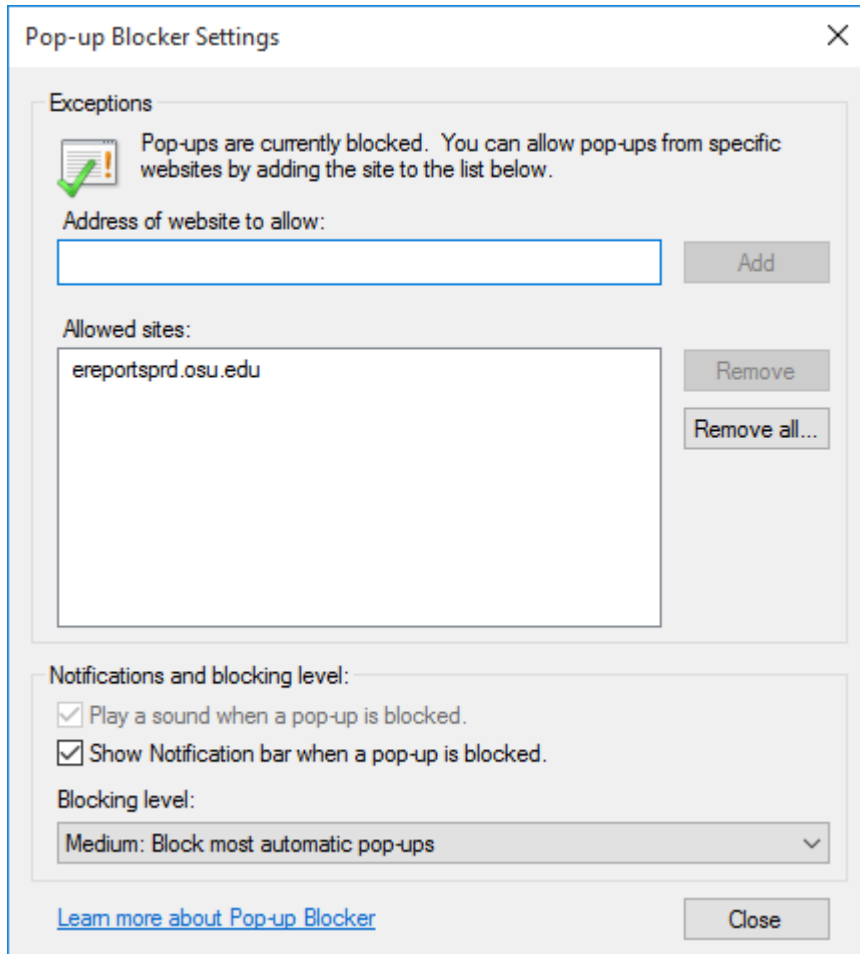
- 38)
- 39) Click "OK" to save your settings.
- 40) Click on the gear at the top right of IE11 to open the "Settings" menu and select the "Internet options" item toward the bottom of the list.
- 41) Click on the "Privacy" tab.
- 42) Make sure that the "Turn on Pop-up blocker" checkbox is checked and click the "Setting" button to the right of that option as shown below.

How to Configure Windows 10 to run eReports on IE11.docx



43)

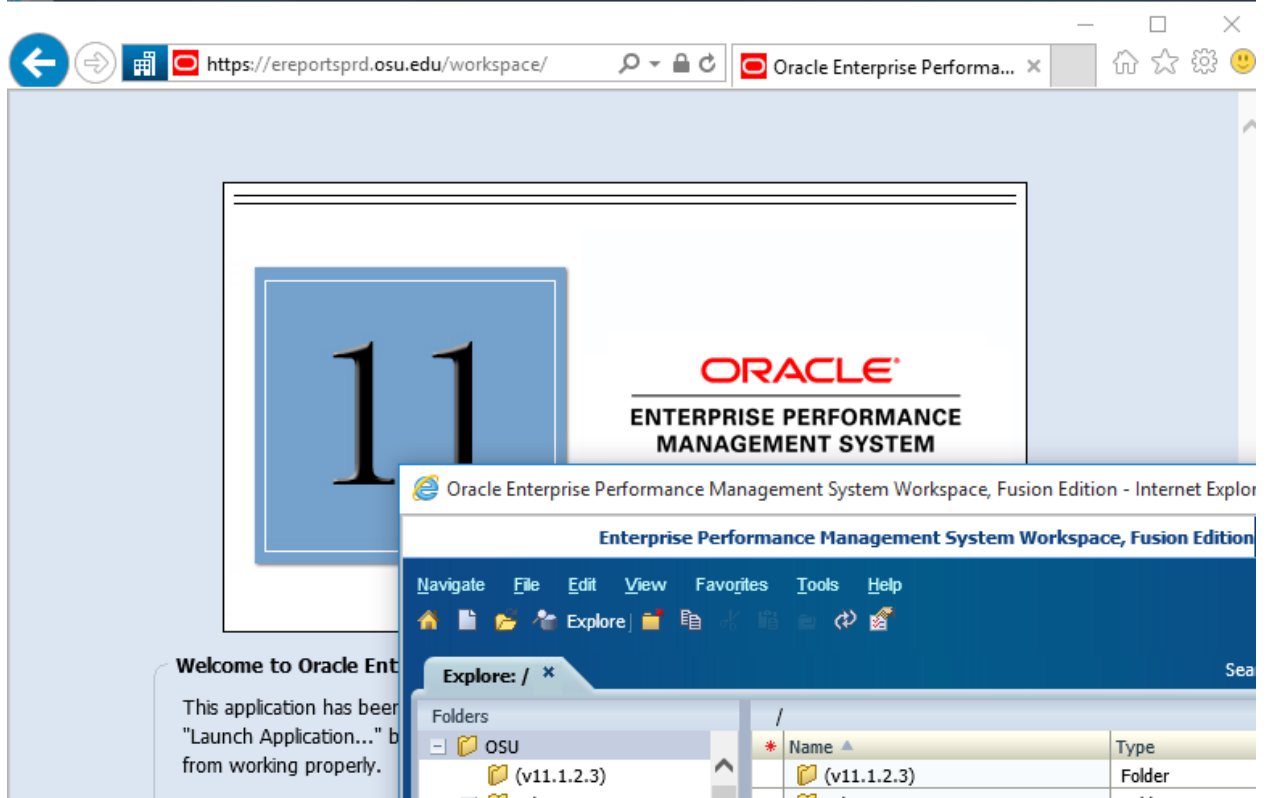
44) Enter "ereportsprd.osu.edu" (without the double-quotes) into the "Address of website to allow" textbox and click the "Add" button. Your dialog should look like the one below.



- 45)
- 46) NOTE: If the user is a developer you should also add "ereportsdev.osu.edu" (without the double-quotes).
- 47) Click "Close" to close the dialog.
- 48) Click "OK" to close the "Internet Options" dialog.
- 49) Now you need to install the plugin.
- 50) Download the IR_Web_Client_Installer.zip from http://ereports.osu.edu/plugin/IR_Web_Client_Installer.zip
- 51) Place it on the user's desktop
- 52) Right click on the IR_Web_Client_Installer.zip file on the user's desktop and click the "Extract All ..." option
- 53) Delete "IR_Web_Client_Installer" from the end of the "Files will be extracted to this folder" entry and click the "Extract" button. This will create a folder on the desktop called "Insight". If you extract the folder elsewhere copy the "Insight" folder to the user's desktop.
- 54) Type "cmd" (without the double-quotes) in the "Search the web and Windows" box and right-click the resulting "Command Prompt" and click on "Run as administrator" to open an administrator command prompt. Change directories to the Insight folder on the user's desktop and run **setupie.bat**.
- 55) Once the plugin is installed you can safely delete the IR_Web_Client_Installer.zip file and the Insight folder.

How to Configure Windows 10 to run eReports on IE11.docx

- 56) Open IE11 and go to “ereports.osu.edu” (without the double-quotes).
- 57) Login to eReports as usual.
- 58) You should now be sent to the site in “Enterprise Mode”.
- 59) The eReports windows should look similar to those below.



- 60)
- 61) NOTE: See the blue icon to the left of the IE11 address bar? That indicates that the site is in “Enterprise Mode”. If you don’t see that icon then something has gone wrong and you’ll have to backtrack. NOTE: It takes about 60 seconds for IE11 to read the “IE11_Enterprise_Mode_Sites.xml” file the first time you load IE11 after enabling Enterprise Mode so maybe you just need to wait a minute and try again just to be sure.
- 62) The eReports site should now be working.
- 63) Note: When you run your first BQY report if you get a popup asking if you should install the Hyperion IR Web Client click “Yes” or “OK” then close and reopen IE11 and go to ereports.osu.edu and you should be good to go.